

## CHANGING OVER THE SERAC FILLER

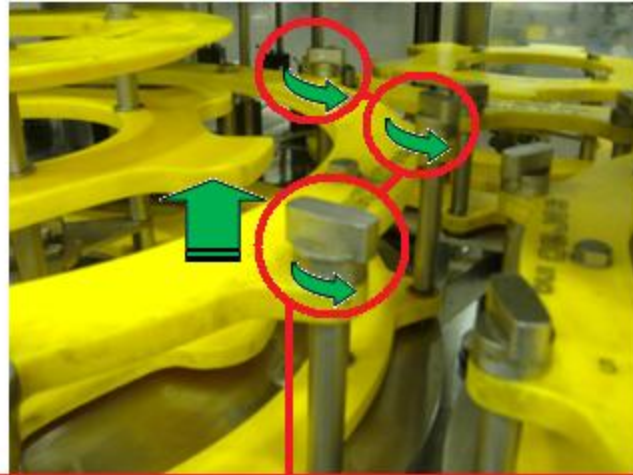
(FOR ILLUSTRATION PURPOSES ONE GALLON TO 96OZ.)

1. The operator removes the **DISCHARGE STARWHEEL EXTERNAL GUIDE (#5)** (*fig. 1-1*).



*figure 1-1: Removing the DISCHARGE STARWHEEL EXTERNAL GUIDE (#5).*

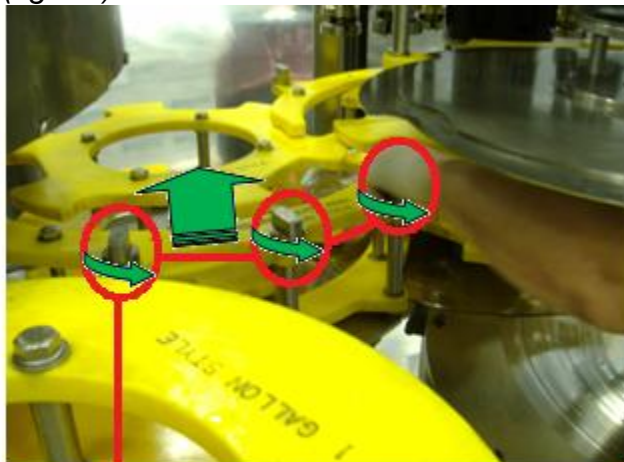
2. Removing the **INFEED STARWHEEL EXTERNAL GUIDE(#1)**(fig.2-1).



**Turn the 3 SECURING KNOBS  
Counter Clockwise to loosen and  
lift upwards to remove.**

*figure 2-1: Removing the INFEED STARWHEEL EXTERNAL GUIDE (#1).*

3. The operator removes the **TRANSFER STARWHEEL EXTERNAL GUIDE (#3)** (fig.3-1).



**Turn the 3 SECURING KNOBS  
Counter Clockwise to loosen  
and lift upwards to remove.**

*figure 3-1: Removing the TRANSFER STARWHEEL EXTERNAL GUIDE (#3)*

4. To remove the INFEED STARWHEEL the operator first has to loosen the **INFEED CONTAINER GUIDE** then he can remove the **INFEED STARWHEEL (#1)** (fig.4-1 and fig.4-2).

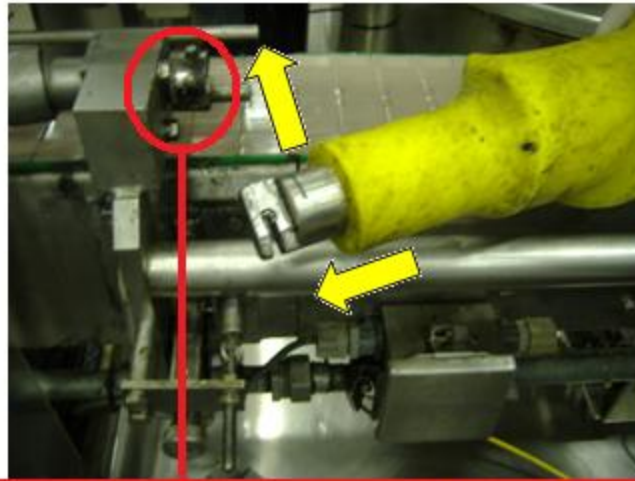


figure 4-1: Loosening the *INFEED CONTAINER GUIDE*.



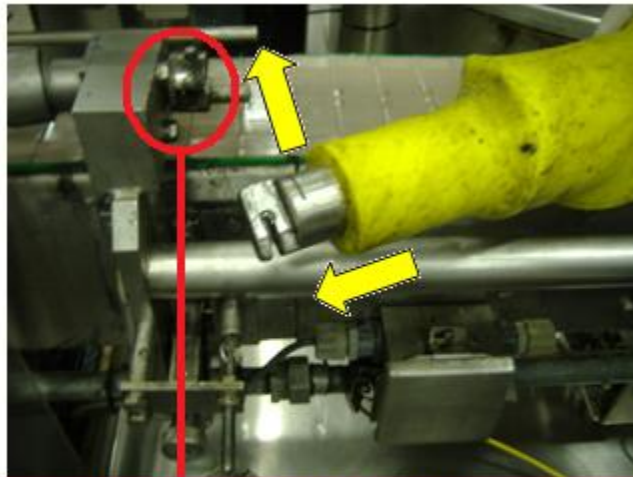
figure 4-2: Removing the *INFEED STARWHEEL*.

5. The operator removes the **TIMING SCREW** and the **INFEED WORM**(fig.5-1 and 5-2).



**Press IN the SECURING BUTTON,  
Push Outward on the TIMING SCREW  
then Pull away from the fixture.**

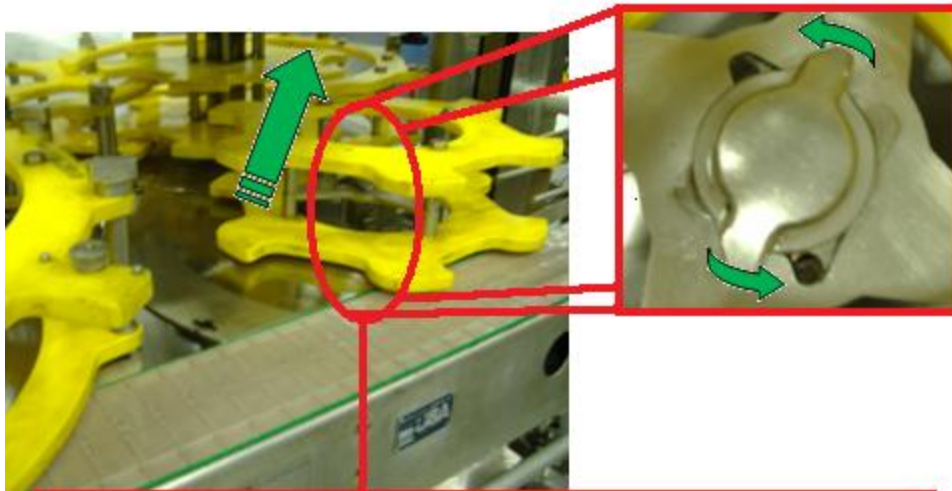
*figure 5-1: Removing the TIMING SCREW.*



**Press IN on the SECURING BUTTON,  
Push Outward on the INFEED WORM  
then Pull away from the fixture.**

*figure 5-2: Removing the INFEED WORM.*

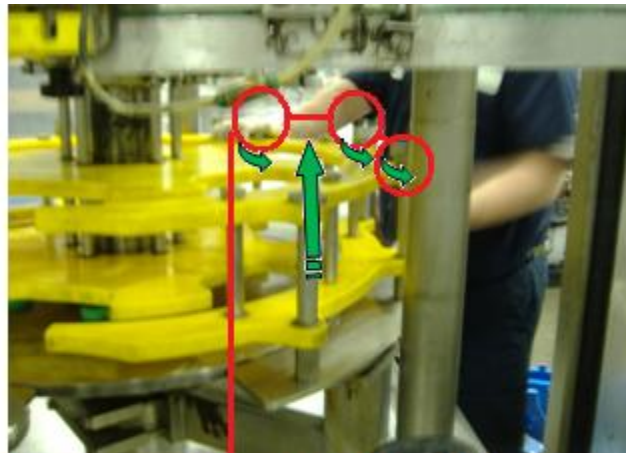
6. Removing the **DISCHARGE STARWHEEL (#5)**(fig.6-1).



**Turn the SECURING CAP Counter Clockwise to loosen and lift upwards to remove.**

*figure 6-1: Removing the DISCHARGE STARWHEEL.*

7. The operator removes the **EXTERNAL CAPPER GUIDE** (fig.7-1).



**Turn the 3 SECURING KNOBS Counter Clockwise to loosen and lift upwards to remove.**

*figure 7-1: Removing the EXTERNAL CAPPER GUIDE.*

