

**SECTION III**  
**CHANGING OVER**

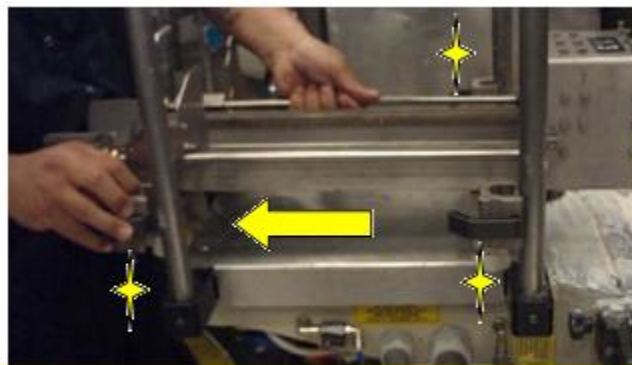
**THE UNIVERSAL KC674 LABELER**

1. Change over for **LABEL STATION #1** (*Only one label is applied for [REDACTED] products so label station#2 is not utilized. If a back label is applied the LABEL STATION #1changes would be the same for label station #2*). Replacement parts are **COLOR CODED** and/or **STAMPED** for identification and stored on shelves in front of the labeler (*fig1-1*).



*figure 1-1: Parts Storage.*

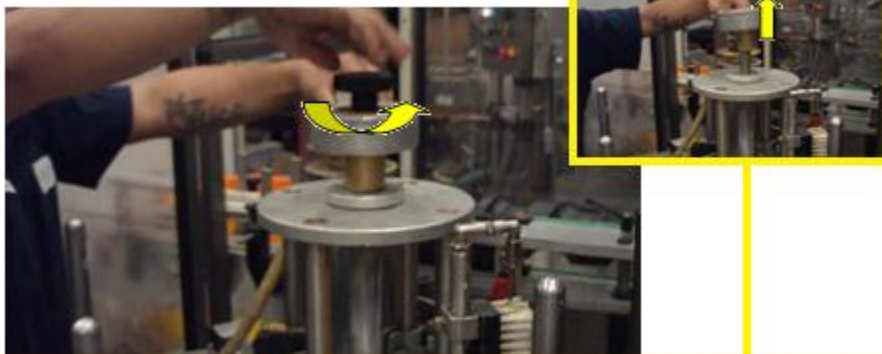
2. The operator removes the **LABEL BASKET** from the **LABEL STATION** (*fig.2-1*).



**Unclamp the 3 Basket Post Clamps  
and Pull Label Basket out.**

*figure 2-1: Removing the LABEL BASKET.*

3. The operator removes the **PALLETS** by:
- a. Removing the **PALLET TURRET COVER ARM** (fig.3-1)



**Unscrew the Securing Knob to loosen and Lift the PALLET TURRET COVER ARM Upwards.**

*figure 3-1: Removing the PALLET TURRET COVER ARM.*

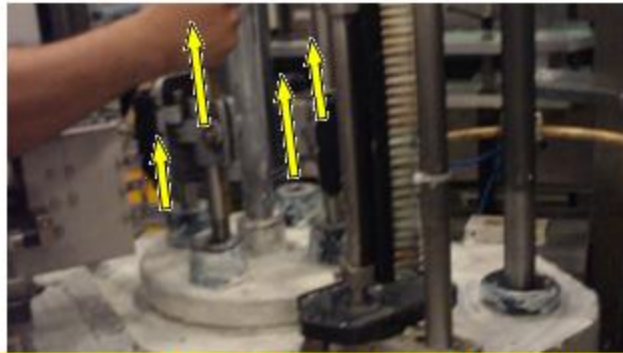
- b. Removing the **PALLET TURRET COVER** (fig.3-2).



**Lift the PALLET TURRET COVER Upwards to Remove.**

*figure 3-2: Removing the PALLET TURRET COVER.*

c. The operator can now remove the **PALLETS** (fig.3-3).



**Remove the PALLETS by Pulling Upwards.**

*figure 3-3: Removing the PALLETS.*

4. To remove the **GRIPPER CYLINDER** from the **LABELER STATION** you should:

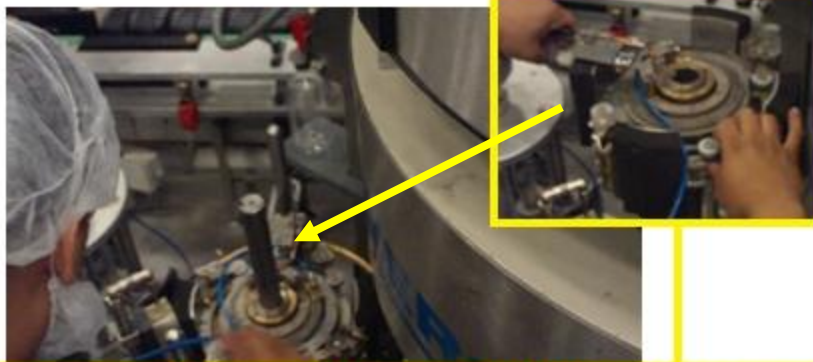
a. First disconnect the **AIR LINE** (fig.4-1).



**Disconnect the GRIPPER AIR LINE with the QUICK DISCONNECT RELEASE.**

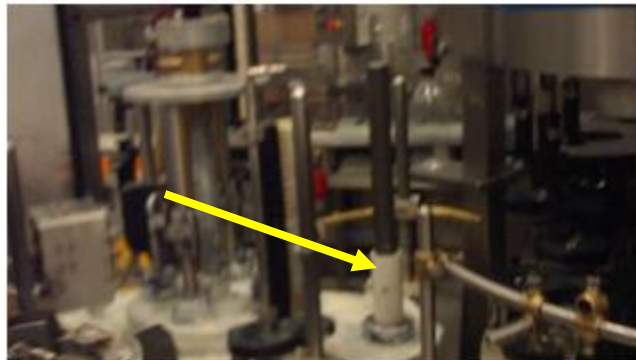
*figure 4-1: Disconnecting the GRIPPER AIR LINE.*

- b. Now you can remove the **GRIPPER CYLINDER** and **SPACERS** (fig.4-2 and fig.4-3).



**Remove the GRIPPER CYLINDER by lifting upwards on the GRIPPER and the CYLINDER ARM.**

*figure 4-2: Removing the GRIPPER CYLINDER.*



**Remove the SPACERS.**

*figure 4-3: Removing the SPACER.*

